

HUMAN DEVELOPMENT RESEARCH REVIEW

VOL 3 (12) DECEMBER 2019



CONTENTS

- [HELP FACULTY and AFFILIATE](#)
- [BIOLOGY/NEUROBIOLOGY \(“early experiences”\)](#)
- [CHILDCARE, ECD SERVICES](#)
- [CHILD DEVELOPMENT \(GENERAL\)](#)
- [INDIGENOUS](#)
- [MIDDLE YEARS](#)
- [PARTNERSHIPS, HUBS, INTEGRATED SERVICES](#)
- [POLICY, PRACTICE, INTERVENTIONS](#)
- [SCREENING](#)
- [SOCIAL DETERMINANTS \(Income, Employment, Housing, Food Security, Inequity, etc\)](#)
- [SOCIOEMOTIONAL](#)
- [MEDIA](#)
- [SPECIAL](#)

Human Development Research Review: Aims and Scope

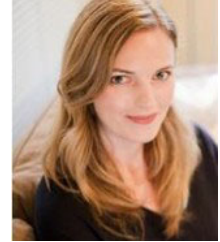
HELP's Human Development Research Review (*HELP Reads*) aims to expand awareness of topics in human development, particularly social epigenetics, social determinants of health, socio-emotional learning, Aboriginal children and youth, and family policy. *HELP Reads* connects health academics, advocates, and professionals with online and publicly available research, news, and information. This review focuses on listing articles relevant to human development research activities at HELP. The review accepts and welcomes contributions provided they meet *HELP Reads* standards. This review is not official or peer reviewed. It does not cover all research, news, and information, and HELP is not responsible for the accuracy of the content from media or databases. How to access the items? Click on the link related to each entry and it should take you to the item. Not all links are open access; some are abstract links where paid journal subscription is required. HELP Reads is posted monthly; please see: www.earlylearning.ubc.ca/library/citations.

EDITOR PICKS

Disentangling the role of income in the academic achievement of migrant children.

Monique Gagne, Post-Doctoral Research Fellow, Human Early Learning Partnership, with Magdalena Janus, Nazeem Muhajarine, Anne Gadermann, Eric Duku, Constance Milbrath, Anita Minh, Barry Forer, Carly Magee, and Martin Guhn

"The results suggest that basic associations between poverty and the outcomes of migrant children mask an underlying complexity..."



Social Epigenetics: How Your Early Life Environment Gets "Under Your Skin".

Kim Schmidt, Research manager, Healthy Starts theme, BC Children's Hospital Research Institute and Michael Kobor, Professor, Human Early Learning Partnership

"...the environments and experiences that we encounter early in life, even before we are born, can have long lasting effects that influence our physical and mental health years later, even if our life's conditions and circumstances have long since changed.."



Heart-Mind 2019: Kimberly Schonert-Reichl, "Helping Children Find Calm in Uncalm Times".

Kim Schonert-Reichl

HELP Director Kim Schonert-Reichl, keynote at Heart-Mind 2019 (Oct 25): The Art & Science of Calm Conference in Vancouver, BC.



Generation Squeeze: Getting to the bottom of why EDI trends aren't getting better.

Paul Kershaw, Associate Professor, Human Early Learning Partnership

HELP Fall Expo 2019 slides – now available...



EDITOR PICKS

EDI BC. Early Development Instrument British Columbia, 2016-2019 Wave 7 provincial report.

Human Early Learning Partnership, 2019 Nov

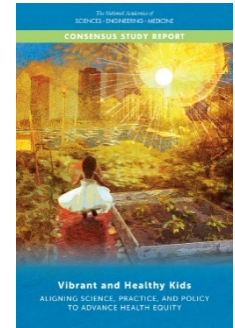
“In this report, we discuss the variability of child vulnerability rates as measured using the Early Development Instrument (EDI) across geographic jurisdictions in BC.”



Vibrant and Healthy Kids: Aligning Science, Practice, and Policy to Advance Health Equity.

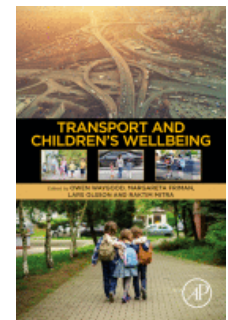
National Academies of Sciences Engineering and Medicine, 2019

“Advancements in neurobiological and socio-behavioral science show that critical biological systems develop in the prenatal through early childhood periods, and neurobiological development is extremely responsive to environmental influences during these stages. Consequently, social, economic, cultural, and environmental factors significantly affect a child’s health ecosystem and ability to thrive throughout adulthood.”



Transportation and Children’s Wellbeing

“This book examines the social, psychological and physical impacts transport has on children at the individual and community level. [...]The book concludes with proposed evidence-based solutions using real-world examples that support positive influences on well-being and eliminate or reduce negative solutions.”



Why mental health lessons start in kindergarten at this B.C. school [YouTube]

See also: <https://www.cbc.ca/news/canada/british-columbia/north-vancouver-school-district-program-1.5334828>.

Leigh Koenigsfest, N Vancouver teacher pictured at right, is featured in this CBC News article. Leigh was the first “Train the Trainer” for the Early Child Development mapping project within the Human Early Learning Partnership.



HUMAN DEVELOPMENT RESEARCH REVIEW

HELP FACULTY and AFFILIATE (selected publications)

1. Gagné M, Janus M, Muhajarine N, Gadermann A, Duku E, Milbrath C, et al. **Disentangling the role of income in the academic achievement of migrant children.** Soc Sci Res. 2020;85:102344. Available from: <http://www.sciencedirect.com/science/article/pii/S0049089X18305611>.
2. Janus M, Reid-Westoby C, Lee C, Brownell M, Maguire JL. **Association between severe unaddressed dental needs and developmental health at school entry in Canada: a cross-sectional study.** BMC Pediatr. 2019;19(1):481. Available from: <https://doi.org/10.1186/s12887-019-1868-x>.
3. Kershaw P. **Generation Squeeze: Getting to the bottom of why EDI trends aren't getting better.** Vancouver, BC: University of British Columbia, School of Population and Public Health, Human Early Learning Partnership; 2019. Available from: http://earlylearning.ubc.ca/media/pk_2019_help_expo_keynote_2019-11-04.pdf.
4. Schmidt K, Kobor M. **Social Epigenetics: How Your Early Life Environment Gets “Under Your Skin”.** Ottawa, ON: Policy Horizons Canada; 2019 Nov 14. Available from: <https://horizons.gc.ca/en/2019/11/14/social-epigenetics-how-your-early-life-environment-gets-under-your-skin/>.
5. Schonert-Reichl K. **Keynote, Heart-Mind 2019: The Art & Science of Calm Conference.** Vancouver, BC: Dalai Lama Center for Peace and Education; 2019. Available from: <https://dalailamacenter.org/heart-mind-2019>.

HELP RESOURCES

1. Human Early Learning Partnership. **EDI BC. Early Development Instrument British Columbia, 2016-2019 Wave 7 provincial report.** Vancouver, BC: University of British Columbia, Faculty of Medicine, School of Population and Public Health; 2019 Nov. Available from: http://earlylearning.ubc.ca/media/edibc_wave7_2019_provincialreport.pdf.

BIOLOGY/NEUROBIOLOGY (“early experiences”)

1. Afifi TO, Fortier J, Sareen J, Taillieu T. **Associations of Harsh Physical Punishment and Child Maltreatment in Childhood With Antisocial Behaviors in Adulthood.** JAMA Network Open. 2019;2(1):e187374-e. Available from: <https://doi.org/10.1001/jamanetworkopen.2018.7374>.
2. Orri M, Geoffroy MC, Turecki G, Feng B, Brendgen M, Vitaro F, et al. Contribution of genes and environment to the longitudinal association between childhood impulsive-aggression and suicidality in adolescence. J Child Psychol Psychiatry. 2019. Available from: <https://onlinelibrary.wiley.com/doi/full/10.1111/jcpp.13163?af=R>.

CHILDCARE, ECD SERVICES

1. Costa S, Benjamin-Neelon SE, Winpenny E, Phillips V, Adams J. Relationship Between Early Childhood Non-Parental Childcare and Diet, Physical Activity, Sedentary Behaviour, and Sleep: A

- Systematic Review of Longitudinal Studies. *Int J Environ Res Public Health*. 2019;16(23):4652. Available from: <https://www.mdpi.com/1660-4601/16/23/4652>.
- Jones RA, Sousa-Sá E, Peden M, Okely AD. **Childcare Physical Activity Interventions: A Discussion of Similarities and Differences and Trends, Issues, and Recommendations**. *Int J Environ Res Public Health*. 2019;16(23):4836. Available from: <https://www.mdpi.com/1660-4601/16/23/4836>.

CHILD DEVELOPMENT (GENERAL)

- Browne DT, May S, Hurst-Della Pietra P, Christakis D, Asamoah T, Hale L, et al. From ‘screen time’ to the digital level of analysis: protocol for a scoping review of digital media use in children and adolescents. *BMJ Open*. 2019;9(11):e032184. Available from: <https://bmjopen.bmj.com/content/9/11/e032184>.
- Norris E, van Steen T, Direito A, Stamatakis E. Physically active lessons in schools and their impact on physical activity, educational, health and cognition outcomes: a systematic review and meta-analysis. *Br J Sports Med*. 2019;bjsports-2018-100502. Available from: <https://bjsm.bmj.com/content/bjsports/early/2019/10/07/bjsports-2018-100502.full.pdf>.
- Proudfoot NA, King-Dowling S, Cairney J, Bray SR, MacDonald MJ, Timmons BW. **Physical Activity and Trajectories of Cardiovascular Health Indicators During Early Childhood**. *Pediatrics*. 2019;144(1):e20182242. Available from: <https://pediatrics.aappublications.org/content/pediatrics/144/1/e20182242.full.pdf>.
- Rhodes RE, Spence JC, Berry T, Faulkner G, Latimer-Cheung AE, O’Reilly N, et al. **Parental support of the Canadian 24-hour movement guidelines for children and youth: prevalence and correlates**. *BMC Public Health*. 2019;19(1):1385. Available from: <https://bmcpublihealth.biomedcentral.com/articles/10.1186/s12889-019-7744-7>.
- Wyver S, Little H. **Early childhood education environments: affordances for risk-taking and physical activity in play**. In: Brewer H, Jalongo MR, editors. *Effective strategies for early childhood educators*. Cham, Switzerland: Springer; 2019. Available from: <https://macquarie-devportal.pure.elsevier.com/en/publications/early-childhood-education-environments-affordances-for-risk-takin>.

Language, Literacy

- Daneri MP, Blair C, Kuhn LJ, Investigators FK. Maternal Language and Child Vocabulary Mediate Relations Between Socioeconomic Status and Executive Function During Early Childhood. *Child Dev*. 2019;90(6):2001-18. Available from: <https://srcd.onlinelibrary.wiley.com/doi/abs/10.1111/cdev.13065>.
- Evans MA, Hulak L. **Learning to read at home: Kindergarten children’s report in relation to observed parent behaviour**. *Early Child Res Q*. 2020;50:38-45. Available from: <http://www.sciencedirect.com/science/article/pii/S0885200618301455>.
- Greenwood CR, Schnitz AG, Carta JJ, Wallisch A, Irvin DW. **A systematic review of language intervention research with low-income families: A word gap prevention perspective**. *Early Child Res Q*. 2020;50:230-45. Available from: <https://www.sciencedirect.com/science/article/pii/S0885200619300511>.
- Heidlage JK, Cunningham JE, Kaiser AP, Trivette CM, Barton EE, Frey JR, et al. **The effects of parent-implemented language interventions on child linguistic outcomes: A meta-analysis**. *Early Child Res Q*. 2020;50:6-23. Available from: <https://www.sciencedirect.com/science/article/pii/S0885200618301546>.

5. Price J, Kalil A. **The Effect of Mother–Child Reading Time on Children’s Reading Skills: Evidence From Natural Within-Family Variation.** *Child Dev.* 2019;90(6):e688-e702. Available from: <https://srcd.onlinelibrary.wiley.com/doi/abs/10.1111/cdev.13137>.
6. Walker D, Carta JJ. **Intervention research to improve language-learning opportunities and address the inequities of the word gap.** *Early Child Res Q.* 2020;50:1-5. Available from: <https://www.sciencedirect.com/science/article/pii/S0885200619301334>.

INDIGENOUS

1. Chan E. **New BC legislation now in force to implement Declaration on the Rights of Indigenous Peoples Act.** Vancouver, BC: Norton Rose Fulbright; 2019 [Dec]; Available from: https://www.nortonrosefulbright.com/en/knowledge/publications/32ff0686/new-bc-legislation-now-in-force-to-implement-declaration-on-the-rights-of-indigenous-peoples-act?utm_source=Mondaq&utm_medium=syndication&utm_campaign=View-Original.
2. Fuller-Thomson E, Lee S, Cameron RE, Baiden P, Agbeyaka S, Karamally TM. **Aboriginal peoples in complete mental health: A nationally-representative Canadian portrait of resilience and flourishing.** *Transcultural Psychiatry.* 2019. Available from: <https://journals.sagepub.com/doi/full/10.1177/1363461519885702>.
3. Hanly M, Falster K, Banks E, Lynch J, Chambers G, Brownell M, et al. Role of maternal age at birth in child development among Indigenous and non-Indigenous Australian children in their first school year: a population-based cohort study. *The Lancet Child & Adolescent Health.* 2019. Available from: [https://www.thelancet.com/journals/lanchi/article/PIIS2352-4642\(19\)30334-7/fulltext](https://www.thelancet.com/journals/lanchi/article/PIIS2352-4642(19)30334-7/fulltext).
4. Johnson-Jennings M, Jennings D, Little M. **Indigenous data sovereignty in action: The Food Wisdom Repository.** *Journal of Indigenous Wellbeing - Te Mauri - Pimatisiwin.* 2019. Available from: https://journalindigenousewellbeing.com/journal_articles/indigenous-data-sovereignty-in-action-the-food-wisdom-repository/.
5. Orłowski P, Cottrell M. **From Colonialism to Neocolonialism: Indigenous Learners and Saskatchewan’s Education Debt.** *New Proposals: Journal of Marxism and Interdisciplinary Inquiry.* 2019;10 (2). Available from: <https://ojs.library.ubc.ca/index.php/newproposals/article/view/191686>.

MIDDLE YEARS

1. Sampasa-Kanyinga H, Colman I, Hamilton HA, Chaput J-P. Outdoor physical activity, compliance with the physical activity, screen time, and sleep duration recommendations, and excess weight among adolescents. *Obesity Science & Practice.* 2019;n/a(n/a). Available from: <https://onlinelibrary.wiley.com/doi/abs/10.1002/osp4.389>.

PARTNERSHIPS, HUBS, INTEGRATED CENTRES/SERVICES

POLICY, PRACTICE, INTERVENTIONS

1. Darcy Mahoney A, McConnell SR, Larson AL, Becklenberg A, Stapel-Wax JL. **Where do we go from here? Examining pediatric and population-level interventions to improve child outcomes.** *Early Child Res Q.* 2020;50:205-20. Available from: <https://www.sciencedirect.com/science/article/pii/S0885200619300122>.

2. Dodge KA. **Redefining the Science and Policy of Early Childhood Intervention Programs.** Pediatrics. 2019;144(6):e20192606. Available from: <https://pediatrics.aappublications.org/content/pediatrics/144/6/e20192606.full.pdf>.
3. Gentry S, Mildren L, Kelly MP. **Why is translating research into policy so hard? How theory can help public health researchers achieve impact?** Public Health. 2020;178:90-6. Available from: <http://www.sciencedirect.com/science/article/pii/S0033350619302951>.
4. National Academies of Sciences Engineering and Medicine. **Vibrant and Healthy Kids: Aligning Science, Practice, and Policy to Advance Health Equity.** Jennifer E. DeVoe AG, and Yamrot Negussie, editor. Washington, DC: National Academies Press; 2019. Available from: <https://doi.org/10.17226/25466>.
5. Nguyen L. **Investing in Families: Building resilience to address mental health inequities.** Antigonish, NS: National Collaborating Centre for Determinants of Health; 2019 Dec 9. Available from: http://nccdh.ca/blog/entry/investing-in-families-building-resilience-to-address-mental-health-inequity?mc_cid=0f8917f2f0&mc_eid=04816d6ac3.
6. Vaghri Z, Krappmann L, Doek J. **From the Indicators of General Comment No. 7 to GlobalChild.** The International Journal of Children's Rights. 2019;27(4):821-51. Available from: https://brill.com/view/journals/chil/27/4/article-p821_821.xml.

SCREENING (tools, methods, school readiness, etc)

1. Ferro MA, Lipman EL, Van Lieshout RJ, Gorter JW, Shanahan L, Boyle M, et al. **Multimorbidity in Children and Youth Across the Life-course (MY LIFE): protocol of a Canadian prospective study.** BMJ Open. 2019;9(11):e034544. Available from: <https://bmjopen.bmj.com/content/9/11/e034544>.

SOCIAL DETERMINANTS

1. Canadian Council on Social Development. **Urban Spotlight: Findings for Canada's cities Neighbourhood Financial Health Index.** CCSD; 2019. Available from: <http://content.tcmediasaffaires.com/LAF/lacom2019/NFHI-Cities-Spotlight-Report.pdf>.
2. García JL, Heckman JJ, Ziff AL. **Early childhood education and crime.** Infant Mental Health Journal. 2019;40(1):141-51. Available from: <https://onlinelibrary.wiley.com/doi/abs/10.1002/imhj.21759>.
3. Wei L, Feeny D. **The dynamics of the gradient between child's health and family income: Evidence from Canada.** Soc Sci Med. 2019;226:182-9. Available from: <http://www.sciencedirect.com/science/article/pii/S0277953619301005>.

SOCIOEMOTIONAL

1. CBC News. **Why mental health lessons start in kindergarten at this B.C. school [YouTube].** 2019 Oct 26. Available from: <https://www.youtube.com/watch?v=Cf6KyXU383U> and <https://www.cbc.ca/news/canada/british-columbia/north-vancouver-school-district-program-1.5334828>.
2. Schmidt M, Werbrouck A, Verhaeghe N, Putman K, Simoens S, Annemans L. **Universal Mental Health Interventions for Children and Adolescents: A Systematic Review of Health Economic Evaluations.** Applied Health Economics and Health Policy. 2019. Available from: <https://doi.org/10.1007/s40258-019-00524-0>.

MEDIA (HELP general)

1. More than 400 attend middle school conference in Abbotsford. The News. 2019 12/08/
Available from: <https://www.abbynews.com/community/more-than-400-attend-middle-school-conference-in-abbotsford/>.
2. Middle school educators invited to ‘Meet in the Middle’. The News. 2019 11/18/
Available from: <https://www.abbynews.com/community/middle-school-educators-invited-to-meet-in-the-middle/>.
3. Plonka G. Communities To Get Early Kindergarten Education. Whitehorse Star. 2019 11/22/
Available from: <https://www.whitehorsestar.com/News/communities-to-get-early-kindergarten-education>.
4. Sherlock T. Special needs students vulnerable in contract negotiations. Vancouver Courier. 2019 12/12/
Available from: <https://issuu.com/vancouver-courier/docs/couthu20191212>.

SPECIAL – Children’s Environmental Health

1. Brown C, de Lannoy A, McCracken D, Gill T, Grant M, Wright H, et al. **Special issue: child-friendly cities**. Cities & Health. 2019;3(1-2):1-7. Available from: <https://doi.org/10.1080/23748834.2019.1682836>.
2. Johansson M, Mårtensson F, Jansson M, Sternudd C. **Chapter Twelve - Urban space for children on the move**. In: Waygood EOD, Friman M, Olsson LE, Mitra R, editors. Transportation and Children’s Well-Being: Elsevier; 2020. p. 217-35. Available from: <http://www.sciencedirect.com/science/article/pii/B9780128146941000129>.
3. Larouche R, Mitra R, Waygood EOD. **Chapter Two - Transport and physical wellbeing**. In: Waygood EOD, Friman M, Olsson LE, Mitra R, editors. Transportation and Children’s Well-Being: Elsevier; 2020. p. 21-39. Available from: <http://www.sciencedirect.com/science/article/pii/B9780128146941000026>.
4. McDonald NC, Palmer WM, Steiner RL. **Chapter Ten - Making the economic case for active school travel**. In: Waygood EOD, Friman M, Olsson LE, Mitra R, editors. Transportation and Children’s Well-Being: Elsevier; 2020. p. 187-97. Available from: <http://www.sciencedirect.com/science/article/pii/B9780128146941000130>.
5. Mitra R, Abbasi Z. **Chapter Thirteen - Bringing back play to urban streets**. In: Waygood EOD, Friman M, Olsson LE, Mitra R, editors. Transportation and Children’s Well-Being: Elsevier; 2020. p. 237-52. Available from: <http://www.sciencedirect.com/science/article/pii/B9780128146941000117>.
6. Navaranjan G, Takaro TK, Wheeler AJ, Diamond ML, Shu H, Azad MB, et al. Early life exposure to phthalates in the Canadian Healthy Infant Longitudinal Development (CHILD) study: a multi-city birth cohort. J Expo Sci Environ Epidemiol. 2019. Available from: <https://www.nature.com/articles/s41370-019-0182-x>.
7. Roberts B, Neitzel RL. **Noise exposure limit for children in recreational settings: Review of available evidence**. J Acoust Soc Am. 2019;146(5):3922. Available from: <https://www.ncbi.nlm.nih.gov/pubmed/31795717>.
8. Skelton K, Herbert A, Benjamin-Neelon SE. **Garden-based interventions and early childhood health: a protocol for an umbrella review**. Systematic Reviews. 2019;8(1):310. Available from: <https://doi.org/10.1186/s13643-019-1229-8>.
9. Waygood EOD, Friman M, Olsson LE, Mitra R. **Chapter One - Introduction to transport and children’s wellbeing**. In: Waygood EOD, Friman M, Olsson LE, Mitra R, editors. Transportation

- and Children's Well-Being: Elsevier; 2020. p. 1-17. Available from:
<http://www.sciencedirect.com/science/article/pii/B9780128146941000014>.
10. Wells NM, Donofrio GA. **Urban Planning, the Natural Environment, and Public Health**☆. In: Nriagu J, editor. Encyclopedia of Environmental Health (Second Edition). Oxford: Elsevier; 2019. p. 286-96. Available from: <http://www.sciencedirect.com/science/article/pii/B9780124095489118317>.
 11. Westman J, Friman M, Olsson LE. **Chapter Three - Travel and child wellbeing: The psychological and cognitive domains**. In: Waygood EOD, Friman M, Olsson LE, Mitra R, editors. Transportation and Children's Well-Being: Elsevier; 2020. p. 41-59. Available from:
<http://www.sciencedirect.com/science/article/pii/B9780128146941000038>.
 12. Witten K, Field A. **Chapter Eleven - Engaging children in neighborhood planning for active travel infrastructure**. In: Waygood EOD, Friman M, Olsson LE, Mitra R, editors. Transportation and Children's Well-Being: Elsevier; 2020. p. 199-216. Available from:
<http://www.sciencedirect.com/science/article/pii/B9780128146941000142>.

For more information visit
www.earlylearning.ubc.ca/library/citations

Michele Wiens, Senior Manager
(Knowledge Management)
Email michele.wiens@ubc.ca

Faculty of Medicine, SPPH
2206 East Mall, UBC
Vancouver, BC V6T 1Z3
Phone 604. 822. 1278
Email earlylearning@ubc.ca
Web www.earlylearning.ubc.ca